



PRODUCT/ MANUAL VALVE

3WBV Series 3 Way Manual Ball Valve (L-Type / T-Type)



Specifications Characteristics







Model	3WBV Series
Medium Temp.	-20°C - 150°C (200°C)
ENV Temp.	Temp. -10 - 55°C ; Humidity. 10 - 90% RH
Pressure	0 - 1.0 Mpa
Flow Direction	L-Type (T-Type)
Body Material	Stainless steel 316
Valve rod Mat.	Stainless steel 316
Gasket Material	PTFE
Stem Material	Stainless steel 316
Seat Material	PTFE
Handle Material	SUS304+Plastic

How to select model

3WBV - **15** **L** **N**

Model Valve body spec. Flow direction Thread Other parts

Thread	Diameter	DN	Code	Spec.	Code	Spec.	Code	Spec.	Code
	1/4"	8	08	L-Type	L-Type	PT	P	TFM4215	X
	3/8"	10	10	T-Type	T-Type	NPT	N		
	1/2"	15	15						
	3/4"	20	20						
	1"	25	25						
	1-1/4"	32	32						
	1-1/2"	40	40						
2"	50	50							

Angle Port	0°	90°	180°	270°
L-Type				
T-Type				

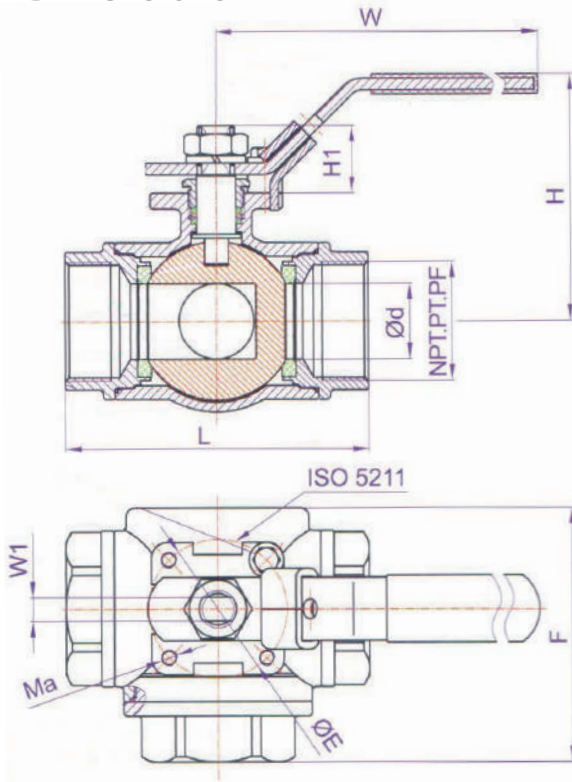


TXMC

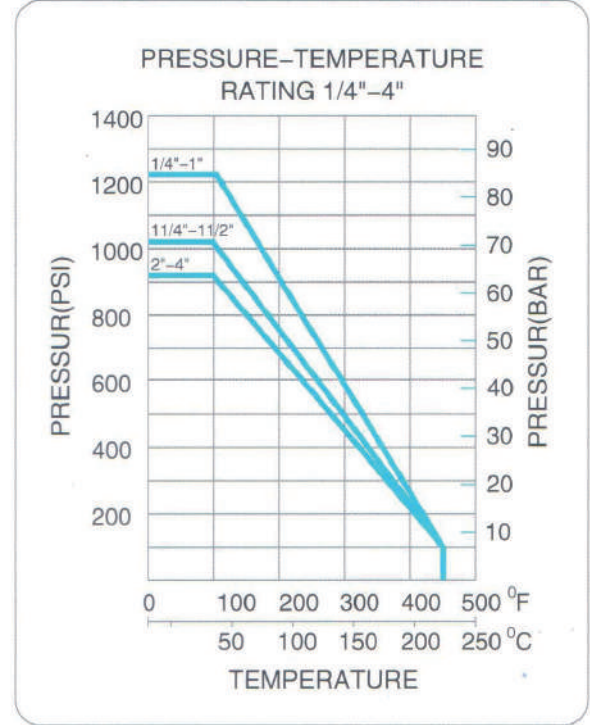


PRODUCT/ MANUAL VALVE

Dimensions



Pressure - temperature Rating



Unit : mm

Size	d	L	F	H	W	E	H1	W1	Ma
1/4"	11.6	76	58.5	67	153	42	18	8	M5
3/8"	12.5	76	58.5	67	153	42	18	8	M5
1/2"	12.5	76	58.5	67	153	42	18	8	M5
3/4"	16	86	72.0	77	153	42	20	8	M5
1"	20	96	81.5	83	183	50	21	9.5	M6
1-1/4"	25	117	94.5	88	183	50	21	9.5	M6
1-1/2"	32	124	104	116	246	70	25	12.5	M8
2"	38	148	125	124	246	70	29	12.5	M8

